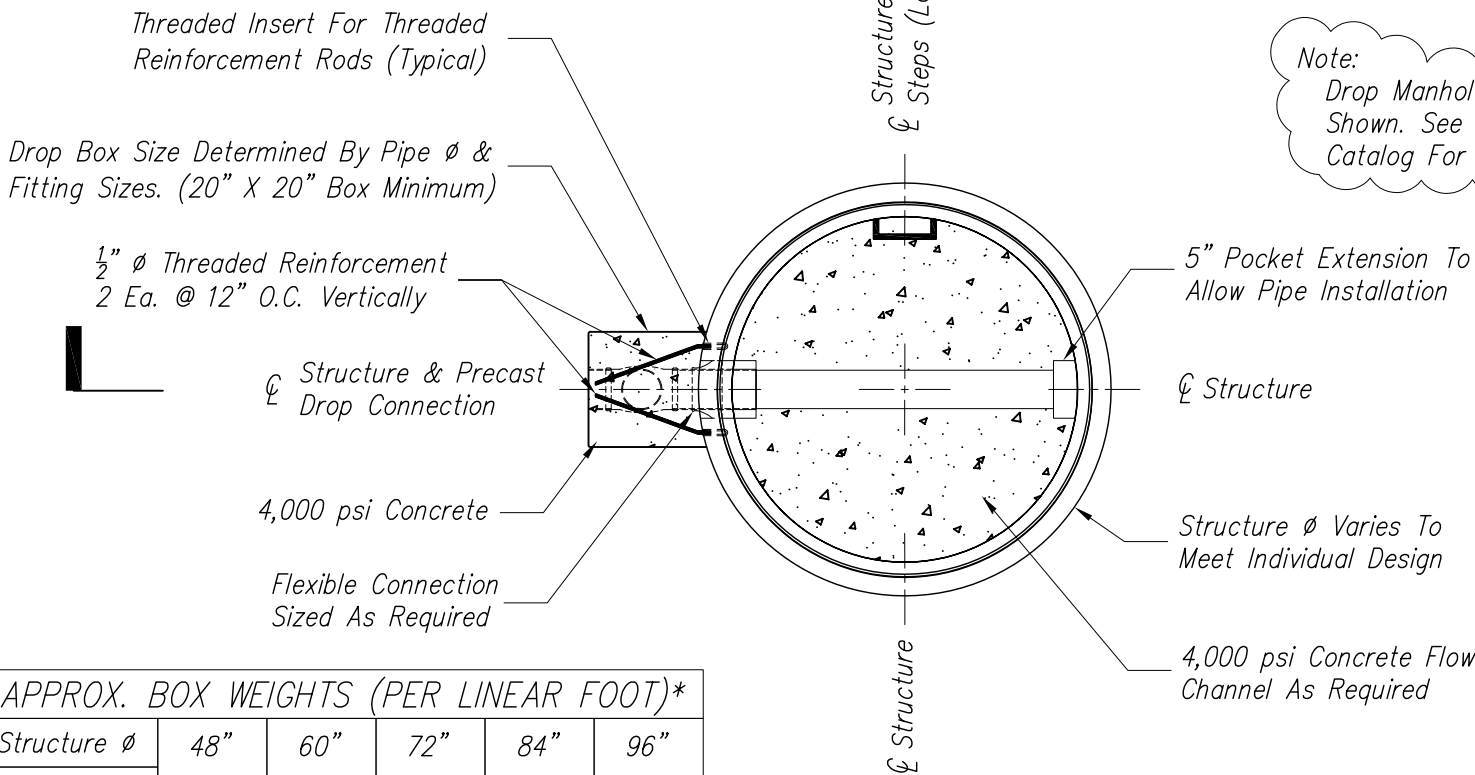


# PRECAST EXTERNAL DROP MANHOLE

APPROVED BY: \_\_\_\_\_  
 COMPANY: \_\_\_\_\_  
 DATE: \_\_\_\_\_



Note:  
Drop Manhole Cover Is Not Shown. See Premarc Product Catalog For Cover Options.

APPROX. BOX WEIGHTS (PER LINEAR FOOT)\*

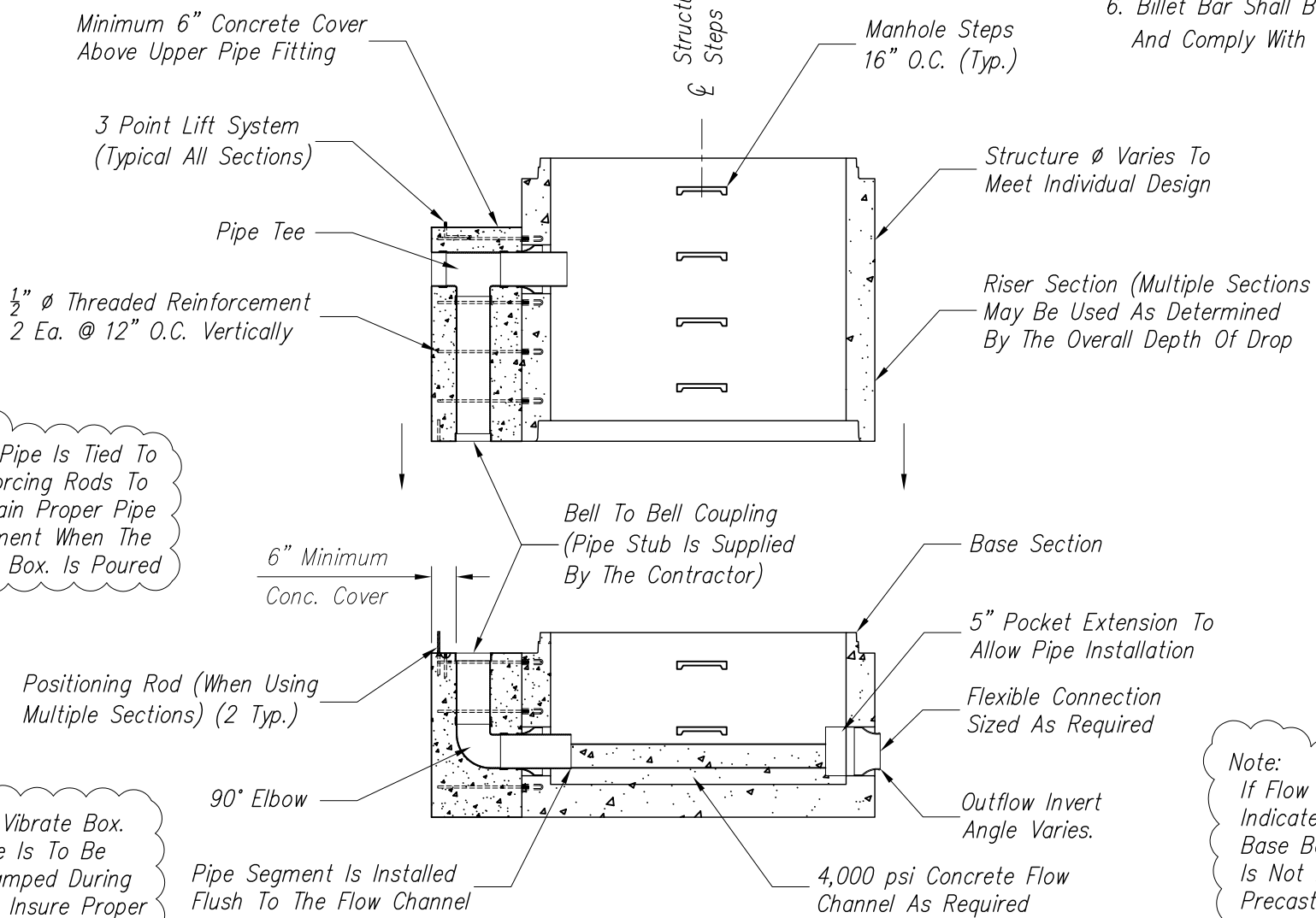
Structure Ø	48"	60"	72"	84"	96"
Box Size**					
20" x 20"	410#	415#	420#	425#	425#
24" x 24"	575#	590#	595#	600#	605#
28" x 28"	770#	790#	805#	810#	820#
32" x 32"	1020#	1,055#	1,075#	1,090#	1,100#
36" x 36"	N/A	1,260#	1,295#	1,315#	1,330#
40" x 40"	N/A	1,525#	1,575#	1,605#	1,630#

PLAN VIEW

Notes:

1. Manhole Components Shall Comply With ASTM C-478.
2. Manhole Joints Shall Comply With ASTM C-443.
3. Flexible Connectors Shall Comply With ASTM C-923.
4. Manhole Steps Are MA Ind. PS1-PF Or Approved Equal.
5. Minimum Concrete Compressive Strength Shall Be 4,000 p.s.i.
6. Billet Bar Shall Be Grade 60 And Comply With ASTM A-615.

\*Added To Initial Base And/Or Riser Weights.  
 \*\*Drop Box Size Determined By Pipe Ø And Fitting Sizes.



Note:  
Drop Pipe Is Tied To Reinforcing Rods To Maintain Proper Pipe Alignment When The Conc. Box. Is Poured

Note:  
Do Not Vibrate Box. Concrete Is To Be Hand Tamped During Pour To Insure Proper Compressive Strength. Hand Trowel External Surfaces After Box Form Is Removed.

Note:  
If Flow Channel Is Not Indicated, An Integral Base Bottom Section Is Not Required For A Precast Drop Connection. In This Case, The Loose Base Ø Would Need To Extend Beyond The Drop Box By A Minimum Of 4"

SECTION VIEW

Drawing No. \_\_\_\_\_

Drawn By: RLH	Scale: 1=40
Sheet No. <b>D1</b>	Chk'd By: JKC
	Date: 01/04/06

## PRECAST EXTERNAL DROP MANHOLE

Sheet Title:  
PLAN & SECTION VIEWS

Producer:  
THE PREMARC CORPORATION

Revisions:

No.	Date
1	
2	
3	
4	

**PREMARC**  
 INFRASTRUCTURE SPECIALISTS SINCE 1927

**7505 Highway M-71  
 Durand, Michigan 48429  
 (989)-288-2661**