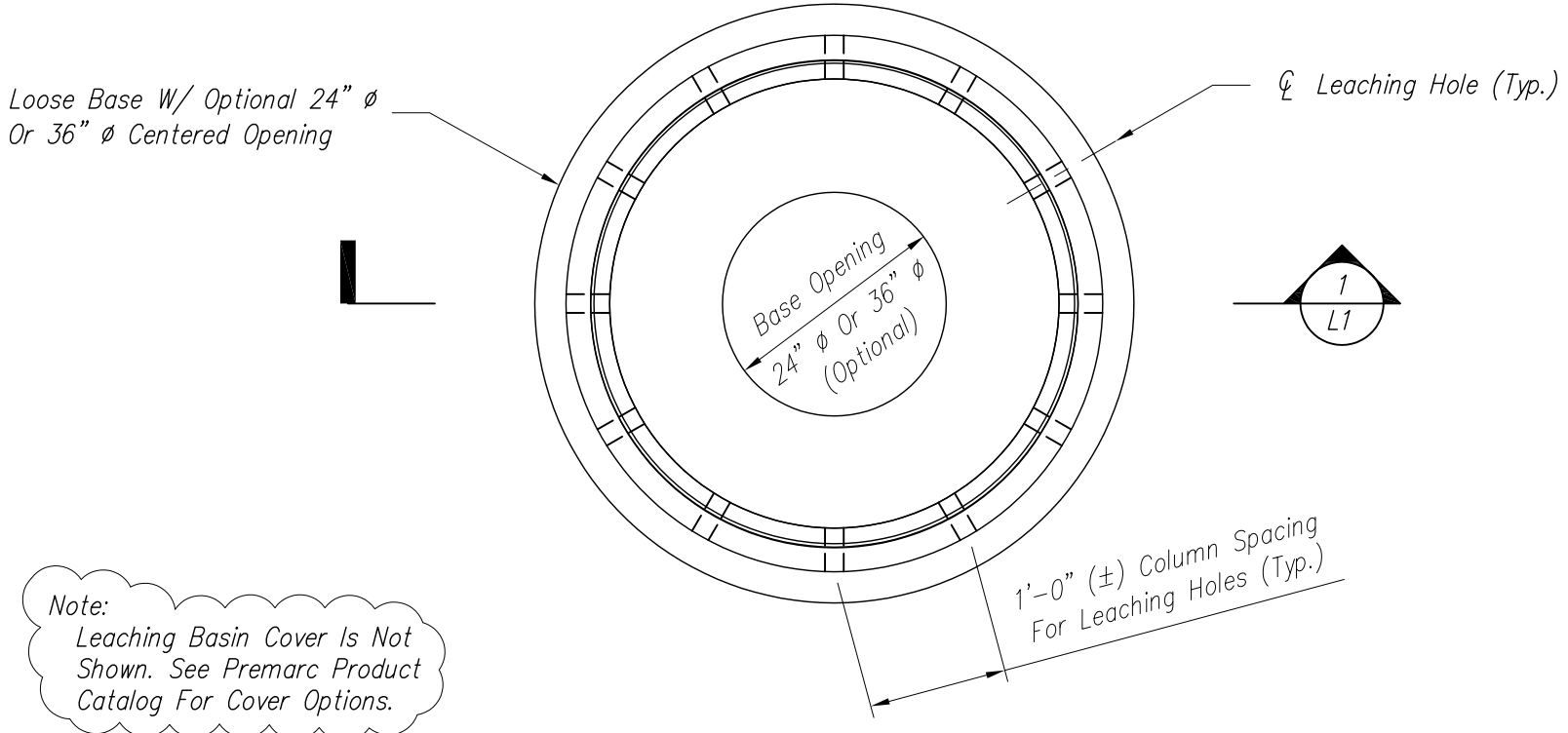


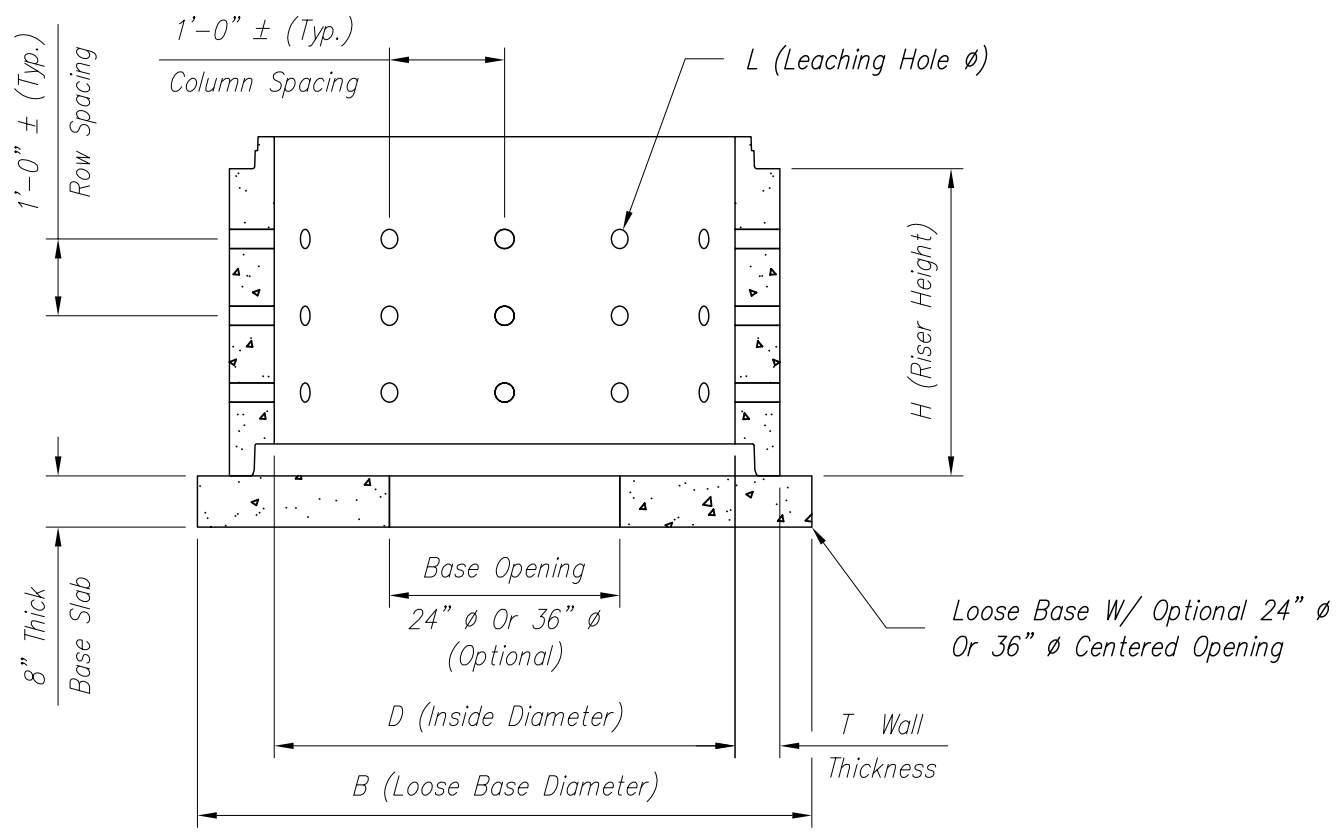
LEACHING BASIN

APPROVED BY: _____
 COMPANY: _____
 DATE: _____



Note:
 Leaching Basin Cover Is Not Shown. See Premarc Product Catalog For Cover Options.

PLAN VIEW



SECTION

- Notes:
1. Manhole Components Shall Comply With ASTM C-478.
 2. Minimum Concrete Compressive Strength Shall Be 4,000 p.s.i.

Component Dimensions					
D	Inside Diameter	48" ϕ	60" ϕ	72" ϕ	96" ϕ
T	Wall Thickness	5"	6"	7"	9"
L	Leaching Hole ϕ	5/8" ϕ	3" ϕ	3" ϕ	3" ϕ
B	Loose Base Diameter	72" ϕ	84" ϕ	96" ϕ	126" ϕ
H	Riser Height*	1'-4"	2'-8"	2'-8"	2'-8"
		2'-8"	4'-0"	4'-0"	4'-0"
		4'-0"	5'-4"	5'-4"	5'-4"
		5'-4"	8'-0"	8'-0"	8'-0"

* Other Riser Heights Are Available Upon Request

Approximate Component Weights					
D	Inside Diameter	48" ϕ	60" ϕ	72" ϕ	96" ϕ
Approx. Riser Weight (Ft.)		896#	1,339#	1,810#	3,093#
Approx. Base Weight (Ea.)		2,830#	3,850#	5,030#	8,660#

Drawing No. _____		<h2>LEACHING BASIN</h2>	Sheet Title: PLAN & SECTION VIEWS		Revisions:		PREMARC <small>INFRASTRUCTURE SPECIALISTS SINCE 1927</small> 7505 Highway M-71 Durand, Michigan 48429 (989)-288-2661
Drawn By: RLH	Scale: 1=30		Producer: THE PREMARC CORPORATION		No.	Date	
Sheet No. L1	Chk'd By: JKC				1		
	Date: 11/30/05				2		