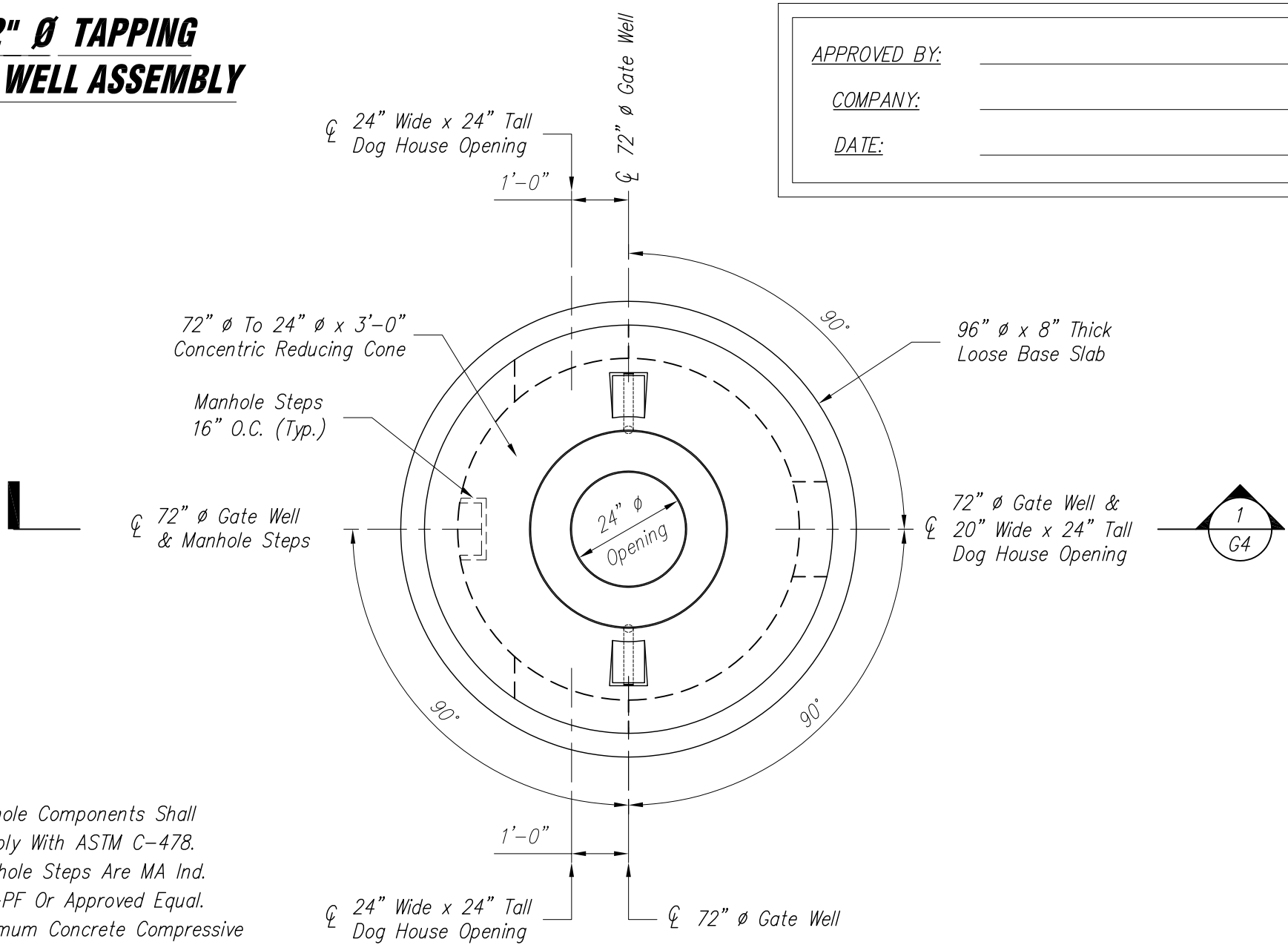


# 72" Ø TAPPING GATE WELL ASSEMBLY

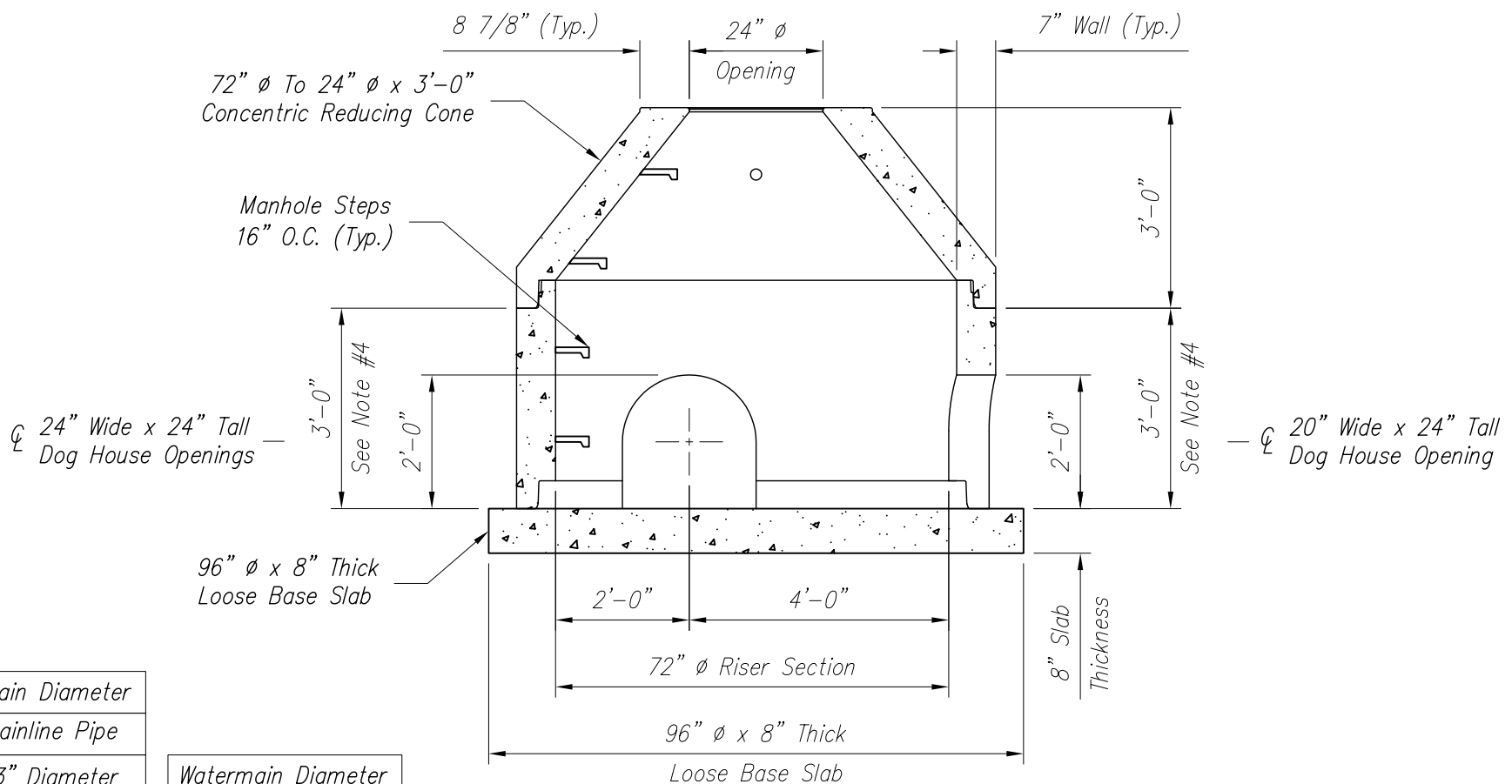
APPROVED BY: \_\_\_\_\_  
 COMPANY: \_\_\_\_\_  
 DATE: \_\_\_\_\_



**Notes:**

1. Manhole Components Shall Comply With ASTM C-478.
2. Manhole Steps Are MA Ind. PS1-PF Or Approved Equal.
3. Minimum Concrete Compressive Strength Shall Be 4,000 p.s.i.
4. See 72" Ø Riser Height Table For Other Commonly Available 72" Ø Risers Heights.

**PLAN VIEW**



**SECTION**

Watermain Diameter For Mainline Pipe	
3" Diameter	
4" Diameter	
6" Diameter	
8" Diameter	
10" Diameter	
12" Diameter	
14" Diameter	
16" Diameter	
18" Diameter	
20" Diameter	

Watermain Diameter For Tapping Pipe	
3" Diameter	
4" Diameter	
6" Diameter	
8" Diameter	
10" Diameter	
12" Diameter	
14" Diameter	
16" Diameter	

Joint Type	72" Ø Riser Height
ASTM C 443	3'-0" (Std.)
ASTM C 990	4'-0"
Mastic	5'-4"
Mortar	8'-0"

72" Ø Riser Height
3'-0" (Std.)
4'-0"
5'-4"
8'-0"

Approximate Component Weights:

96" Ø x 8" Thick Loose Base Slab	5030#
72" Ø x 3'-0" Riser Section	5430#
72" Ø To 24" Ø x 3'-0" Concentric Cone	4700#

Drawing No. \_\_\_\_\_  
 Scale: 1=30  
 Drawn By: GCB  
 Sheet No. **G4**  
 Chk'd By: JKC  
 Date: 12/05/05

## 72" Ø TAPPING GATE WELL ASSEMBLY

Sheet Title:  
 PLAN & SECTION VIEWS  
 Producer:  
 THE PREMARC CORPORATION

Revisions:	
No.	Date
1	
2	
3	
4	

**PREMARC**  
 INFRASTRUCTURE SPECIALISTS SINCE 1927  
 7505 Highway M-71  
 Durand, Michigan 48429  
 (989)-288-2661